

Digital board DCC ref MPPE447

This printed circuit board allows you to digitize the BB75000/75100/75400 Os.Kar 1st generation locomotives. This board uses a NEM660 21 MTC socket in order to control up to 8 functions, which allows you to independently control the white and red lights, the cab light and the 3rd light at each end.

The DMPE references are gradually replacing the MPPE references.

Compatibility

BB75000/75100/75400 Os.Kar 1st generation.

Special recommendations

Read the instructions carefully before starting to install a MPPE/DMPE board.

Warning: Your decoder must be programmed according to the lighting or accessories that you connect to the auxiliary outputs

Presentation

The MPPE/DMPE digitization boards are developed by our company.

For a quick and resumed presentation of all pads and places, read the generic DMPE documentation.

Different stages of assembly

You can remove certain fragile parts or those that you could lose during assembly (cables and buffers).

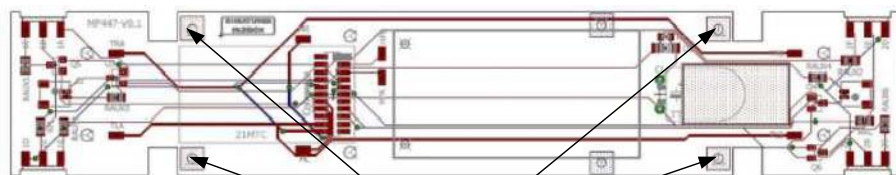
Dismantle the body by unscrewing the 4 screws located behind the interior axle of each boggie and then unscrew the original board.

For the motor power supply, recover the original two wires onto the motor that you will solder onto the MR and ML pads on the MPPE447 board.

Mount the MPPE447 board making sure that nothing touches and could cause a short circuit, if in doubt, do not hesitate to isolate using electronics adhesive such as those from Distrimodel references HY6-2-4, HY6-2-6, HY6-2-8, HY6-2-10 or HY6-2-12.

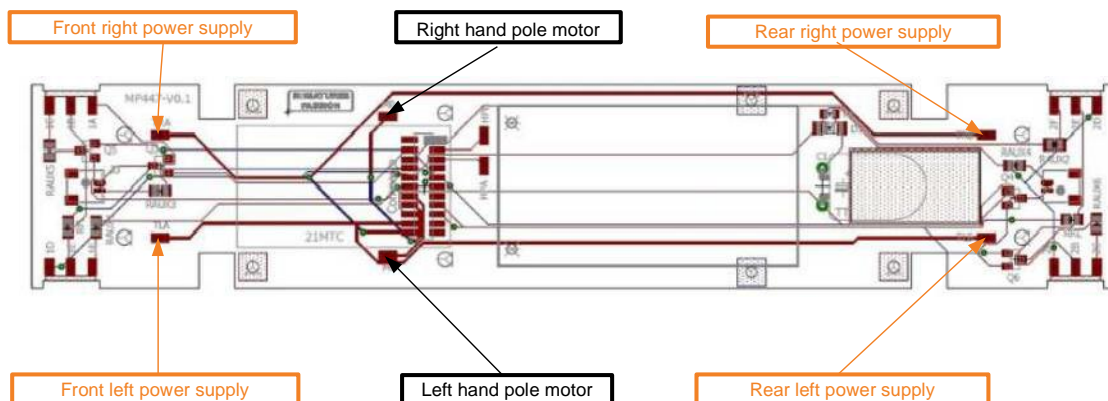
You can then solder the wires of the bogies on the MPPE447 board on the TLA, TLB, TRA, TRB pads.

Fixing on the chassis



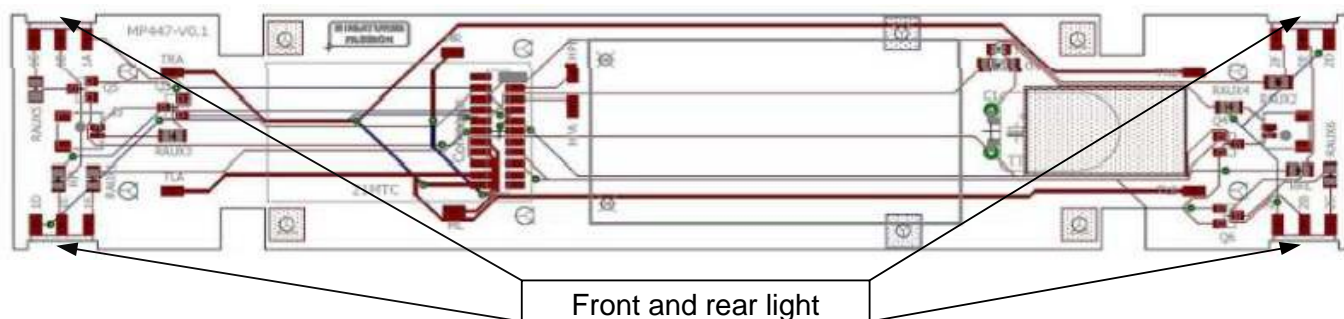
Fixing holes for screws

Power supply and motor connection



Front and rear lights connection

Reference	Wire color	Ouput	Function
1A	Red	+	+
1B	Brown	Front light	White lights
1C	Black	Aux5	3 rd light
1D	Red	+	+
1E	Orange	Front light	White lights
1F	Black	Aux1	Red lights
2A	Red	+	+
2B	Brown	Rear light	White lights
2C	Black	Aux6	3 rd light
2D	Red	+	+
2E	Orange	Rear light	White lights
2F	Black	Aux2	Red lights



Decoder installation

The decoder installs as on original board.

Warning : Your decoder must be programmed for this board and it's different from the original one.

Enjoy your installation

Don't hesitate to publish your creations on FaceBook and Instagram with @Distrimodel #MPPE447 #Digitalboard #PlatineDMPE447