

## Digital board DCC ref DMPE0804

This printed circuit allows to digitize BB27000/27300/37000/37500 Méhano to replace original DCC NEM 652 socket in order to be able to control up to 4 functions which allows to independently control the white and red lights of each end. The DMPE references are gradually replacing the MPPE references.

### Compatibility

BB27000/27300/37000/37500 Méhano

### Special recommendations

Read the instructions carefully before starting to install a MPPE/DMPE board.

Warning: Your decoder must be programmed according to the lighting or accessories that you connect to the auxiliary outputs. In analog mode, the lights will not work.

## Presentation

The MPPE/DMPE digitization boards are developed by our company.

For a quick and resumed presentation of all pads and places, read the generic DMPE documentation.

## Different stages of assembly

You can remove certain fragile parts or those that you could lose during assembly (cables and buffers).

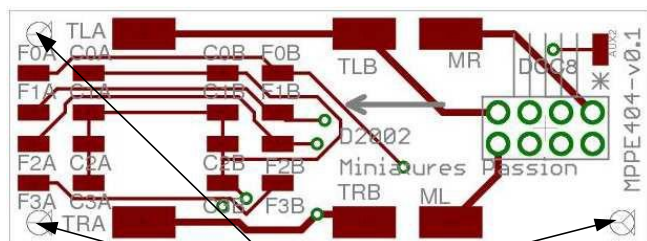
Dismantle the body by unscrewing the 4 screws located behind the interior axle of each boggie and then unscrew the original board.

For the motor power supply, recover the original two wires onto the motor that you will solder onto the MR and ML pads on the DMPE0804board.

Mount the DMPE0804 board making sure that nothing touches and could cause a short circuit, if in doubt, do not hesitate to isolate using electronics adhesive such as those from Distrimodel references HY6-2-4, HY6-2-6, HY6-2-8, HY6-2-10 or HY6-2-12.

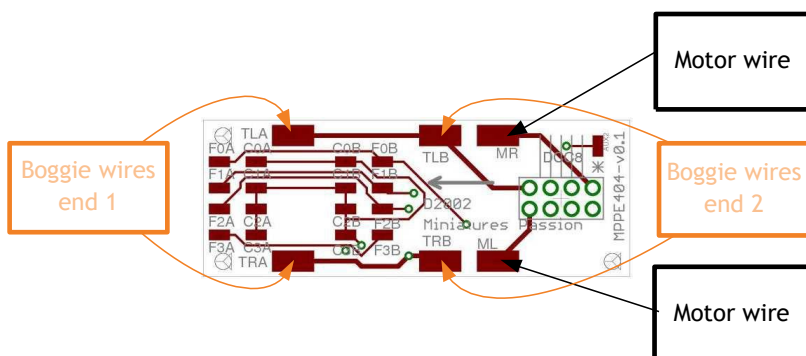
You can then solder the wires of the bogies on the DMPE0804 board on the TLA, TLB, TRA, TRB pads.

## Fixing on the chassis

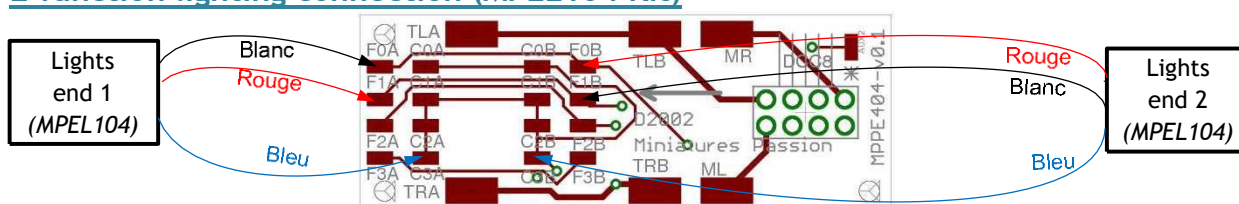


Original screws

## Power supply and motor connection



## 2-function lighting connection (MPEL104 Kit)

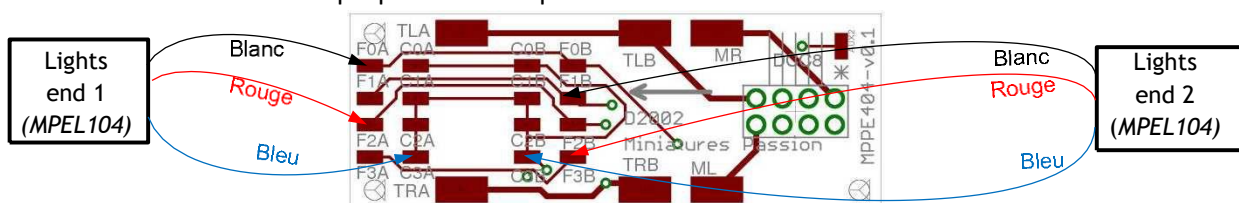


The C0A, C1A, C2A, C3A, C0B, C1B, C2B and C3B pads are connected to +12V and can be used interchangeably. Without modification of the CVs

F0: lighting of the whites and reds according to the direction

## 4-function lighting connection (MPEL104 Kit)

A 4 functions decoder with purple wire is required



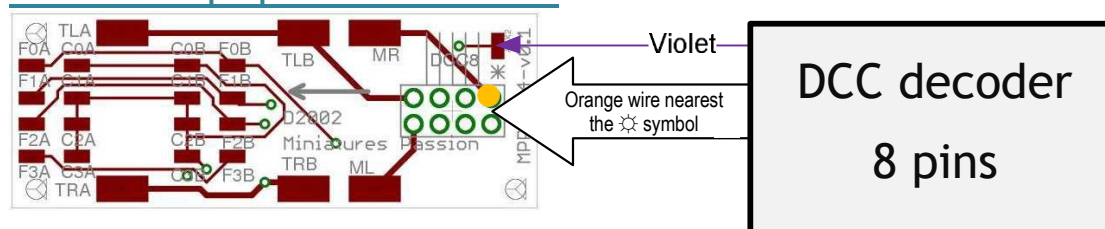
The C0A, C1A, C2A, C3A, C0B, C1B, C2B and C3B pads are connected to +12V and can be used interchangeably. Without modifying the CVs

F0: white lights according to the direction

F1: red lights end 1

F2: red lights end 2

## Decoder and purple wire installation



Enjoy your installation

Don't hesitate to publish your creations on FaceBook and Instagram with @Distrimodel #DMPE0804 #Digitalboard #PlatineDMPE0804